

ANACO



PLATO™





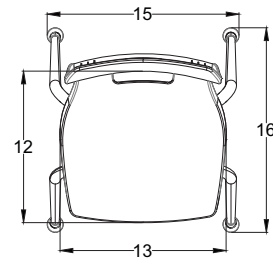
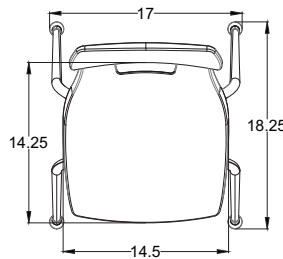
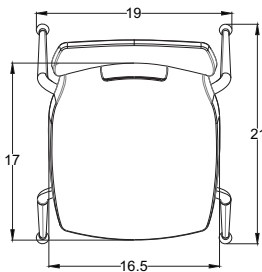
Model 00950
18" seat height, 'A' Shell.
Shown in Persian Blue.

Model 00951
16" seat height, 'B+' Shell.
Shown in Cerulean.

Model 00952
14" seat height, 'B' Shell.
Shown in Apple.

Plato seat pans

are oversized for today's growing kids. Choose from A, B+ and B shells.



Plato Seating Stack Chair

The Plato Seating Stack Chair provides roominess to today's growing students through its oversized seat pan, which also allows the student to comfortably face front and both sides. The seatback offers some flex front-to-back and provides pronounced lumbar support, encouraging good posture and breathing. Its fresh, yet familiar shape connotes comfort to the student.

- The shell rests on the frame, not rivets, to add comfort.
- High-density polypropylene shell with color throughout.
- Durable swivel-base glides with non-staining nylon bases and chrome-plated steel covers come standard. Or choose optional steel or felt glides.
- The legs are strong, 18-gauge welded steel with a durable chrome finish.
- 14", 16" and 18" sizes.
- 17 colors.

Model	Description	D"	W"	H"	F.C.	Cube	Wt.	UPS
00950	Plato Stack Chair A shell - 18"h	21	19	18	125	4.0	11	*
00951	Plato Stack Chair B+ shell - 16"h	18.25	17	16	125	4.0	9	*
00952	Plato Stack Chair B shell - 14"h	16	15	14	125	4.0	8	*

S Steel glide option for stacking chairs Set of 4 installed

F Felt glide option for stacking chairs Set of 4 installed

Glide Options

Nylon base is standard. Optional are steel base and felt base:

*This is factory installed option not available for field installation. Glide option must be on original chair order.

Steel glide option: Add 'S' to follow Model No.

Felt glide option: Add 'F' to follow Model No.

Model	Description	D"	W"	H"	F.C.	Cube	Wt.	UPS
17234	Wire Bookrack for 18"h Stack Chair only (Model 00950)							



Plato Stool

The Plato Stool provides roominess to today's growing students through its oversized seat pan, which also allows the student to comfortably face front and both sides. The seatback offers some flex front-to-back and provides pronounced lumbar support, encouraging good posture and breathing. Its fresh, yet familiar shape connotes comfort to the student.

- The shell rests on the frame, not rivets, to add comfort.
- High-density polypropylene shell with color throughout.
- Durable swivel-base glides with non-staining nylon bases and chrome-plated steel covers come standard. Or choose optional steel or felt glides.
- The legs are strong, 18-gauge welded steel with a durable chrome finish.
- 17 colors.

Model	Description	D"	W"	H"	F.C.	Cube	Wt.	UPS
00980	Plato Fixed-height Stool A shell - 28"h	21	19	28	125	18	18	*
00981	Plato Fixed-height Stool A shell - 24"h	21	19	24	125	16	16	*
S	Steel glide option for stacking chairs	Set of 4 installed						
F	Felt glide option for stacking chairs	Set of 4 installed						

Glide Options

Nylon base is standard. Optional are steel base and felt base:

*This is factory installed option not available for field installation. Glide option must be on original chair order.

Steel glide option: Add 'S' to follow Model No.

Felt glide option: Add 'F' to follow Model No.



Adj. Chair, Model 00960

Adj. Stool, Model 00966

Plato Adjustable Chair & Plato Adjustable Stool

The Plato Adjustable Chair provides roominess to today's growing students through its oversized seat pan. The seatback offers some flex front-to-back and provides pronounced lumbar support, encouraging good posture and breathing. Its fresh, yet familiar shape connotes comfort to the student.

- The shell rests on the frame, not rivets, to add comfort.
- High-density polypropylene shell with color throughout.
- 5-star base in Black.
- Choose glides or casters.
- The legs are strong, 18-gauge welded steel with a durable chrome finish.
- Adjusts from 16-21" high (chair) and 22-32" high (stool)
- 17 colors.

Model	Description	D"	W"	H"	F.C.	Cube	Wt.	UPS
Plato Adjustable Chair								
00960	Plato Adjustable Chair w/glides	28	28	16-21	85	2.1	26	*
00961	Plato Adjustable Chair w/casters	28	28	16-21	85	2.1	26	*
Plato Adjustable Stool								
00965	Plato Adjustable Stool w/ glides	28	28	22-32	85	2.4	34	*
00966	Plato Adjustable Stool w/ casters	28	28	22-32	85	2.4	34	*

Plato Chair Shell Color Choice



Frame





Plato P-Tablet Arm Chair

Plato Seating allows the student to comfortably face front and the side. The seatback offers some flex front-to-back and offers pronounced lumbar support, encouraging good posture and breathing on the part of the student. Top is available in 3/4" 3mm T-Mold edge or 3/4" **Bullet T-Mold edge (standard)** thickness. Chair shell available in 17 colors. Tablet in 10 standard laminate colors and 20 edge colors. Frame in Chrome.

- High-pressure laminate top.
- The shell rests on the frame, not rivets, to add comfort.
- High-density polypropylene shell with color throughout.
- Durable swivel-base glides with non-staining nylon bases and chrome-plated steel covers come standard. Or choose optional steel or felt glides.
- The legs are strong, 18-gauge welded steel with a durable chrome finish.

Model	Description	D"	W"	H"	F.C.	Cube	Wt.	UPS	
00975V	Plato P-Tablet Right-hand - A shell	21	19	18	125	15	15	*	
00976V	Plato P-Tablet Left-hand - A shell	21	19	18	125	15	15	*	
S	Steel glide option for stacking chairs								Set of 4 installed
F	Felt glide option for stacking chairs								Set of 4 installed

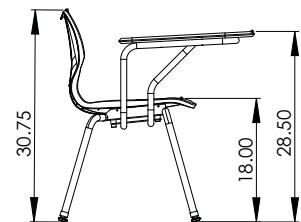
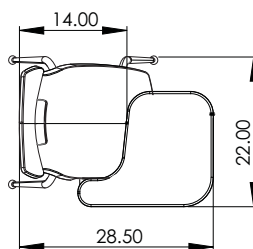
Glide Options

Nylon base is standard. Optional are steel base and felt base:

*This is factory installed option not available for field installation. Glide option must be on original chair order.

Steel glide option: Add 'S' to follow Model No.

Felt glide option: Add 'F' to follow Model No.

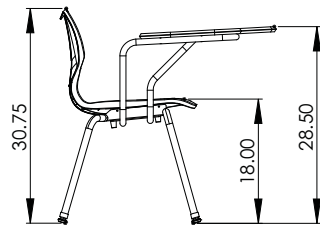
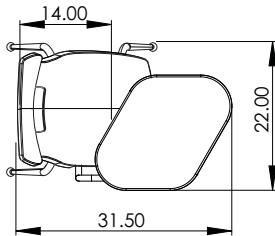




Plato Rhombus

Plato Seating allows the student to comfortably face front and the side. The seatback offers some flex front-to-back and offers pronounced lumbar support, encouraging good posture and breathing on the part of the student. Top is available in 3/4" 3mm T-Mold edge or 3/4" **Bullet T-Mold edge (standard)** thickness. Chair shell available in 17 colors. Tablet in 10 standard laminate colors and 20 edge colors. Frame in Chrome.

- High-pressure laminate top.
- The shell rests on the frame, not rivets, to add comfort.
- High-density polypropylene shell with color throughout.
- Durable swivel-base glides with non-staining nylon bases and chrome-plated steel covers come standard. Or choose optional steel or felt glides.
- The legs are strong, 18-gauge welded steel with a durable chrome finish.



Model	Description	D"	W"	H"	F.C.	Cube	Wt.	UPS
00977V	Plato Rhombus Right-hand - A shell	21	19	18	125		17	*
00978V	Plato Rhombus Left-hand - A shell	21	19	18	125		17	*
S	Steel glide option for stacking chairs				Set of 4 installed			
F	Felt glide option for stacking chairs				Set of 4 installed			

Glide Options

Nylon base is standard. Optional are steel base and felt base:

*This is factory installed option not available for field installation. Glide option must be on original chair order.

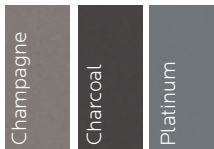
Steel glide option: Add 'S' to follow Model No.

Felt glide option: Add 'F' to follow Model No.

Plato Chair Shell & Desk Edge Color Choice



Additional Edge Only Color Choice



Plato Tablet Arm Desks Have Top and Edge Choices



CHOICE 5 - 3/4" top with 3mm T-Mold
G to follow Model No.

CHOICE 6 - 3/4" top with Bullet T-Mold
V to follow Model No.

Standard Laminate Desk Top Color Choices



Frame

